

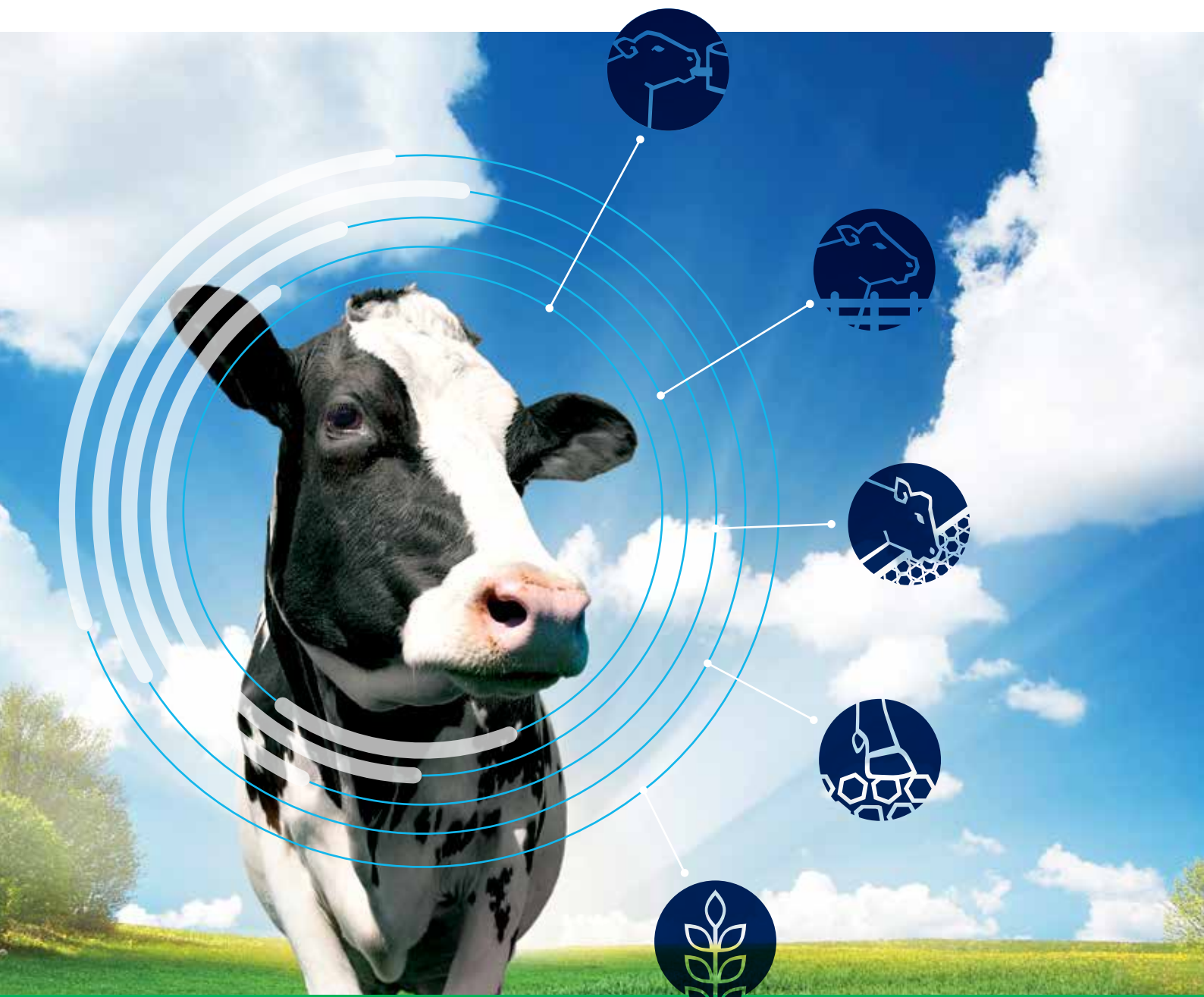


Blue Pacific  
**MINERALS**

Agriculture



CLEVER *by* NATURE



# ANIMAL HEALTH CATALOGUE

▶ CALVING

▶ HERD

▶ FARM



# CONTENTS

## CALVING

First 60 Days Calving Solution .....	4
OptiCalf™ Flourish   OptiCalf™ .....	6
Rumen development .....	7
ZorbiFresh™ Active .....	8
Optimum calf bedding .....	9

## HERD

Optimal production for 365 days .....	10
Optimate™ range .....	11
Optimate™ Energise   Optimate™ Power Up .....	12
Optimate™ Sustain   Optimate™ Maintain .....	13
Optimate™ Vital   Optimate™ Protect .....	14
Optimate™ Hoof Rescue   Optimate™ Advantage .....	15
Maximin™   Maximin™ Protect .....	16
Maize Balancer .....	17
OptiSolve™ 5 .....	18
OptiSolve™ MULTX Original   OptiSolve™ MULTX 5-in-1 .....	19

## FARM

StockRock® .....	20
ZorbiFresh™ .....	22
ZorbiFresh™ Active .....	23



Blue Pacific Minerals (BPM) is a Tokoroa based, NZ owned business, providing more natural solutions to everyday challenges across multiple industries, around the globe.

- Agriculture 
- Plant + Soil + Turf 
- Environmental 
- Home + Health 
- Industrial 

A real emphasis for the business is in NZ Agriculture where customers see immediate and sustainable benefits from using BPM solutions.

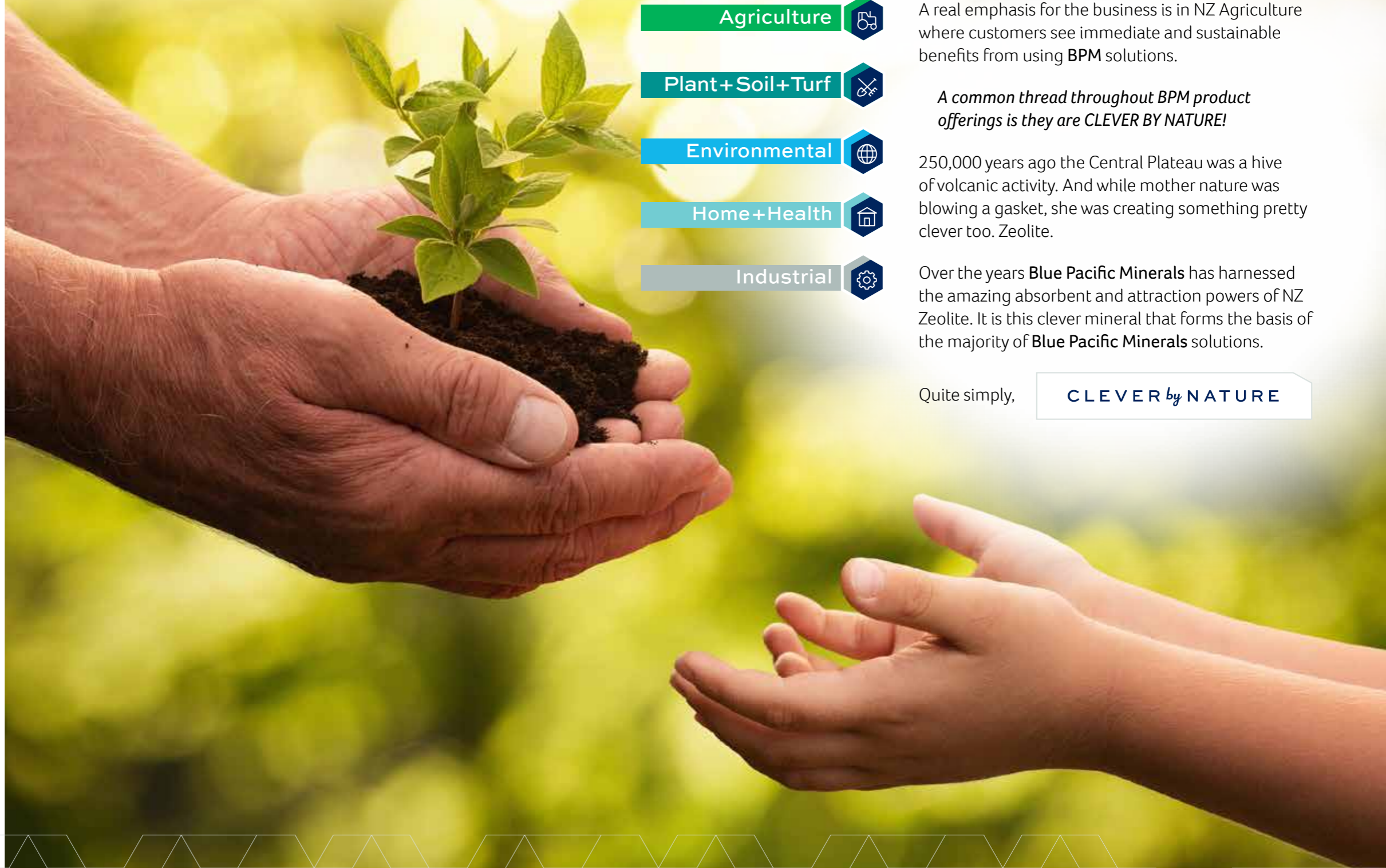
*A common thread throughout BPM product offerings is they are CLEVER BY NATURE!*

250,000 years ago the Central Plateau was a hive of volcanic activity. And while mother nature was blowing a gasket, she was creating something pretty clever too. Zeolite.

Over the years Blue Pacific Minerals has harnessed the amazing absorbent and attraction powers of NZ Zeolite. It is this clever mineral that forms the basis of the majority of Blue Pacific Minerals solutions.

Quite simply,

**CLEVER by NATURE**





# FIRST 60 DAYS CALVING SOLUTION

## THE CHALLENGES:

<b>LOW ENERGY</b> Cold and wet when born, drains energy	<b>FEED DELAYS</b> Delay to first feed reduces ability to absorb needed antibodies and nutrients	<b>COMPACT CALVING</b> Compact calving pattern means less time for staff to attend calves individually	<b>BACTERIA RISKS</b> Colostrum alone may not have significant enough antibodies to protect calves	<b>OVER-CROWDING</b> Overcrowding in feeding pens, sharing feeding teats, wet bedding increases bacterial challenge	<b>LOW RESISTANCE</b> No resistance to disease like E. coli and salmonella, only defence is colostrum	<b>SKILL SHORTAGE</b> Shortage of skilled labour to think proactively	<b>AMMONIA THREAT</b> Ammonia from urine on bedding can cause respiratory infections	<b>WASTE MILK</b> Often fed waste milk, not refrigerated, harbouring pathogenic bacteria

THE SIZE OF THE CHALLENGE INCREASES AS MORE CALVES ARE BORN

## THE SOLUTIONS:

**24**  
FIRST 24 HOURS IS CRITICAL FOR ANTIBODY AND NUTRIENT ABSORPTION

**OptiCalf™**  
Calf health naturally

Feed **OptiCalf™** adlib for extra insurance against diarrhoea

HELPS COMBAT THE CHALLENGES OF:



**OptiCalf™**  
FLOURISH  
Providing the best start in life

Mixed with milk, **OptiCalf™ Flourish** provides probiotics for the best start in life

HELPS COMBAT THE CHALLENGES OF:



**ZORBIFRESH™**  
ACTIVE  
Actively enhance animal bedding

**ZorbiFresh™ Active** absorbs ammonia and moisture in bedding and kills E. coli and Staph aureus

HELPS COMBAT THE CHALLENGES OF:





## OPTICALF™ FLOURISH

Let the digestive tract flourish with **billions of good bacteria**



### ABOUT OPTICALF™ FLOURISH:

- Kemin® CLOSTAT® probiotics to assist with the maintenance of health and productivity of animals
- Suitable for minor cases of calf diarrhoea
- Designed to be added to milk to easily distribute to calve
- Uses NZ Zeolite in the form of Optimate™ a registered toxin binder

### DIRECTIONS FOR USE:

For minor cases of calf diarrhoea add 10 gm per calf, per day to milk.

### ABOUT KEMIN CLOSTAT®:

Kemin® CLOSTAT® is a patented strain of Bacillus subtilis PB6, with proven potency across various applications, and species, providing a guaranteed level of beneficial probiotic bacteria, to assist with the maintenance of health and productivity of animals. For best results, feed daily to maintain optimal intestinal microflora levels.

### INGREDIENTS:

Optimate™ACVM Registration Number A011800  
See [www.foodsafety.govt.nz](http://www.foodsafety.govt.nz) for registration conditions

Bacillus subtilis PB6

PACK SIZE: 20 KG  
Available from your Rural Retailer



## OPTICALF™

Calf health naturally



### ABOUT OPTICALF™:

- 100% natural
- Great value for money
- Raise healthy calves
- Calves love the taste
- BioGro Certified input for organics
- Toxin binding

### DIRECTIONS FOR USE:

For minor cases of calf diarrhoea provide 20 gm per calf, per day into feed troughs.

### LOVED BY CALF REARERS

OptiCalf™ has been fed to calves for almost 20 years and is loved by calf rearers nationwide.

### INGREDIENTS:

Optimate™ACVM Registration Number A011800  
See [www.foodsafety.govt.nz](http://www.foodsafety.govt.nz) for registration conditions

PACK SIZE: 20 KG  
Available from your Rural Retailer

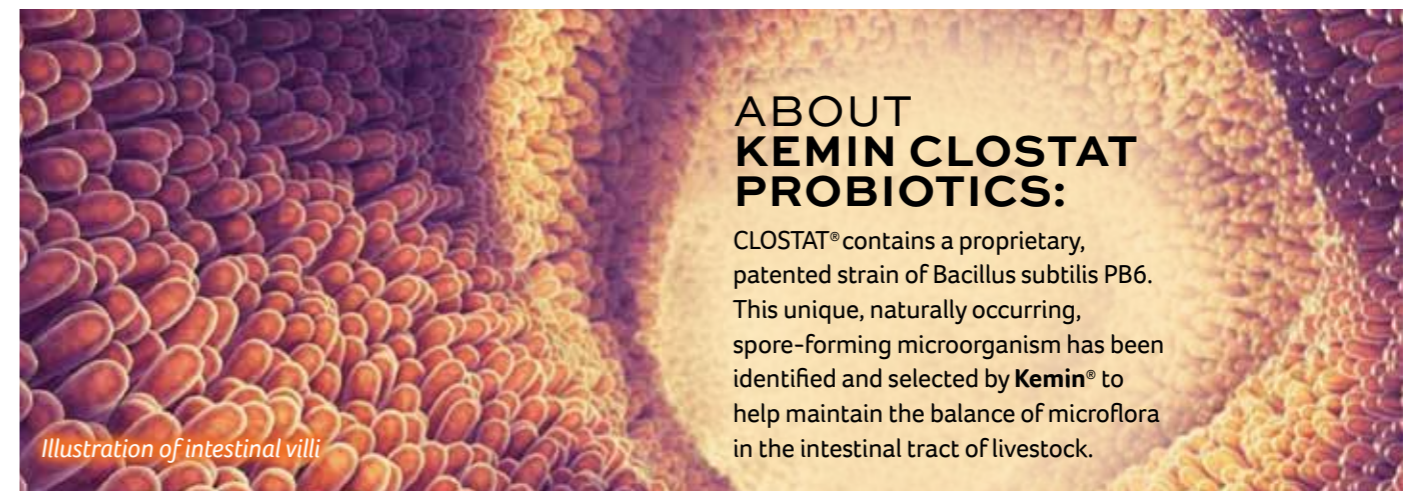


## RESULTS OF A HEALTHY RUMEN:

- Less challenges on calves
- Better feed utilisation
- Faster development
- Getting to weaning faster
- Better developed rumen for the life of the cow

Successful calf rearing, is geared towards a healthy and productive adult, with a well developed and functioning rumen.

## THE DEVELOPMENT OF THE RUMEN:



## ABOUT KEMIN CLOSTAT PROBIOTICS:

CLOSTAT® contains a proprietary, patented strain of Bacillus subtilis PB6. This unique, naturally occurring, spore-forming microorganism has been identified and selected by Kemin® to help maintain the balance of microflora in the intestinal tract of livestock.

Illustration of intestinal villi



## ZORBIFRESH™ ACTIVE

Reduce bacteria, ammonia and moisture in bedding



### ABOUT ZORBIFRESH™ ACTIVE:

- A bedding additive for cows, calves, equine and swine
- Absorbs up to 199% of its weight in moisture
- Reduces odour for a safer environment
- Starts killing bacteria (including Staph aureus and E. coli) as soon as it is applied and keeps killing beyond 24 hours

### DIRECTIONS FOR USE:

From 250 grams to 500 grams per square meter of animal bedding.

### KEEP PENS CLEAN & DISEASE FREE

ZorbiFresh™ Active can be used as part of a regular process to keep calf pens clean and disease free, but is also highly effective in larger doses post a bacterial outbreak.

### INGREDIENTS:

Natural BPM zeolite from New Zealand

Oxone

PACK SIZE: 20 KG  
Available from your Rural Retailer



## LABRATORY TESTED

ZorbiFresh™ Active has been tested using the industry standard *laboratory efficacy evaluation test*.

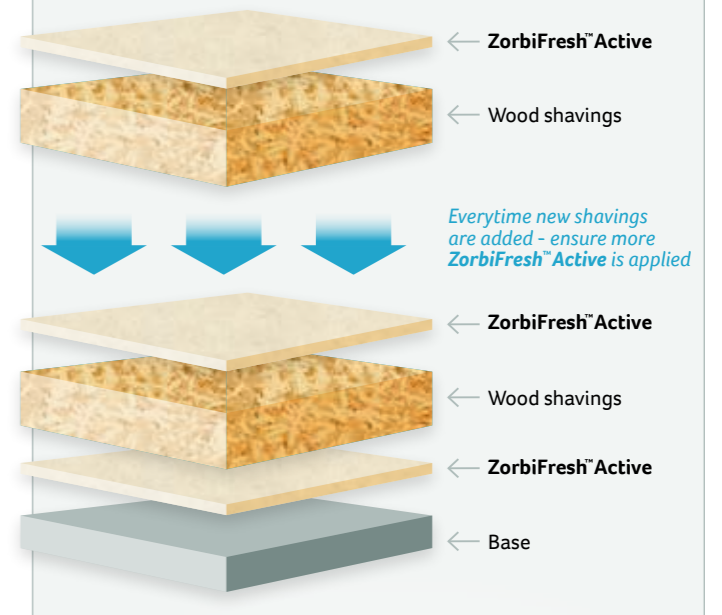
- ZorbiFresh™ Active is 100% effective against Staph aureus and E. coli after 1 hour exposure
- Organic soiling of the bedding reduced the efficacy of ZorbiFresh™ Active after 1 hour exposure but 100% kill was achieved after 24 hours exposure

ZorbiFresh™ Active absorbs up to 199% of its weight in moisture, soaking up ammonia and nitrates. It is not just the moisture that the product adsorbs but the porosity allows the bedding to dry out.

ZorbiFresh™ Active kills bacteria such as Staph aureus and E. coli and other gram negative and gram positive bacteria.

The two major diseases leading to calf mortality are scours and pneumonia. Pneumonia is a respiratory disease, so reducing ammonia in the air surrounding calves is part of lessening the risk associated with calf housing.

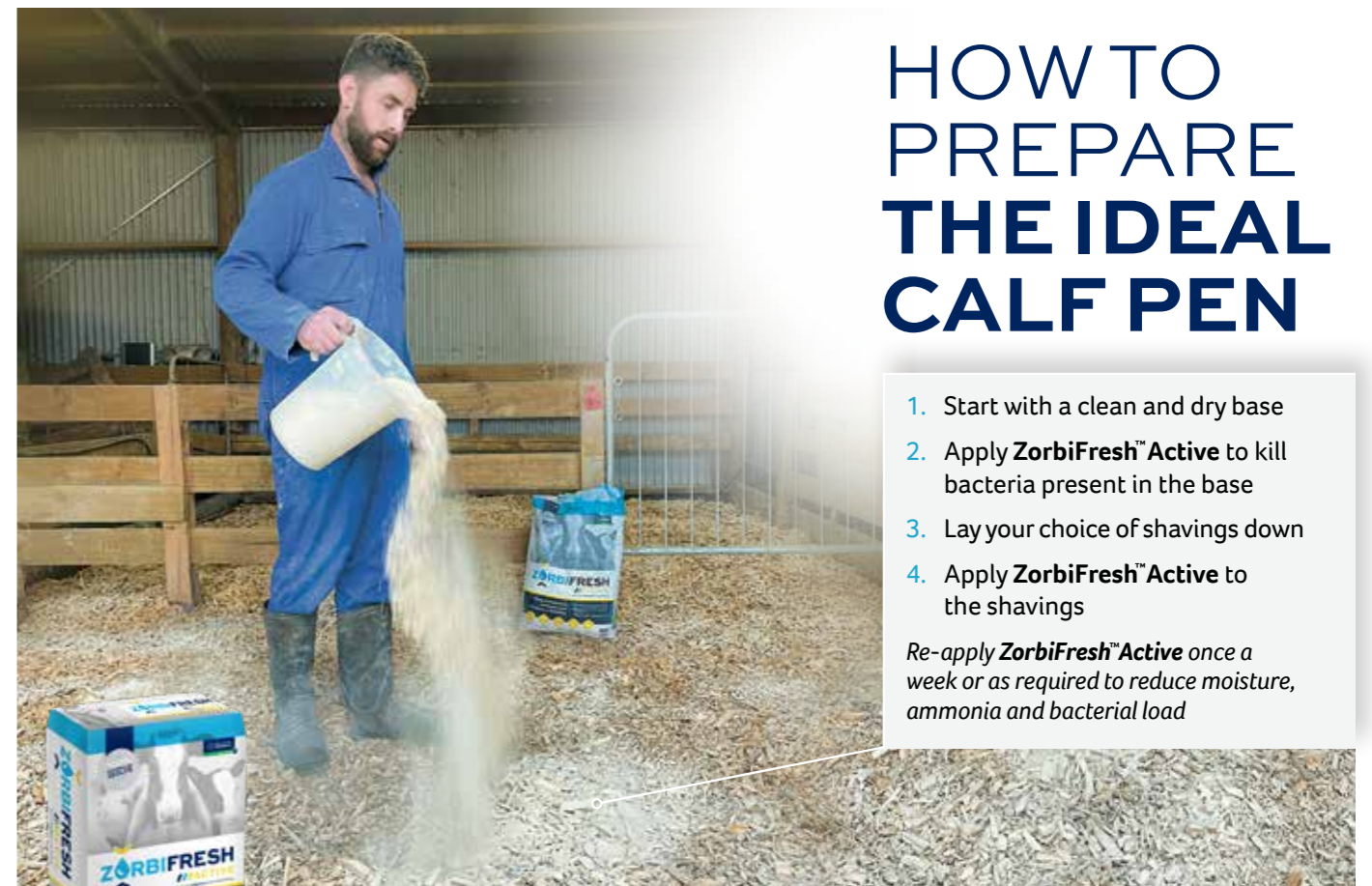
## OPTIMUM CALF BEDDING:



## HOW TO PREPARE THE IDEAL CALF PEN

1. Start with a clean and dry base
2. Apply ZorbiFresh™ Active to kill bacteria present in the base
3. Lay your choice of shavings down
4. Apply ZorbiFresh™ Active to the shavings

Re-apply ZorbiFresh™ Active once a week or as required to reduce moisture, ammonia and bacterial load



ZorbiFresh™ Active is especially useful after a high bacterial challenge such as scours.

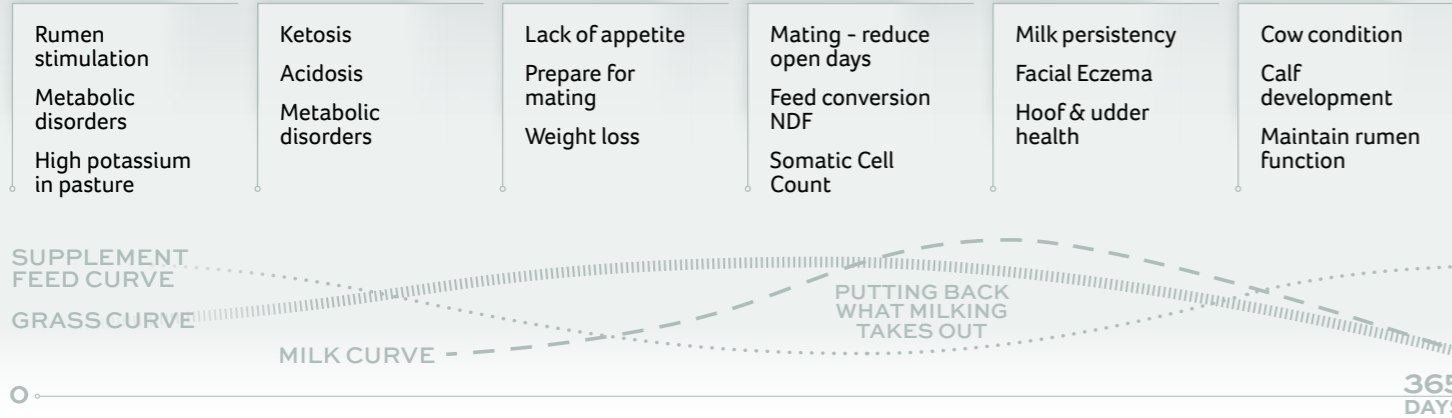




# FOCUS ON 365 DAYS FOR OPTIMAL PRODUCTION



## CHALLENGES:



## SOLUTIONS:

An example product line up



### PRODUCT FEATURES:

**A COMPLETE PROGRAM FOR EACH FARMING SYSTEM**

**6 IN 1:**

- Rumen buffer
- Prebiotics
- Probiotics
- Macro minerals
- Trace elements
- Toxin binder

**DISPERSIBLE GRANULE:**

- Low dust
- Less handling
- Bagged in 1
- Natural and safe

**NEW ZEALAND MADE & OWNED:**

- Formulated by Nutritionists
- Backed by science
- High quality ingredients
- Nationwide offering

# Optimate™

## THE OPTIMATE™ RANGE

We listened to farmer feedback, merged this with advice from animal nutritionists and micro-biologists to create a range that seamlessly fits into each part of the farming calendar, boosting cow health and production.

**PROBIOTICS**

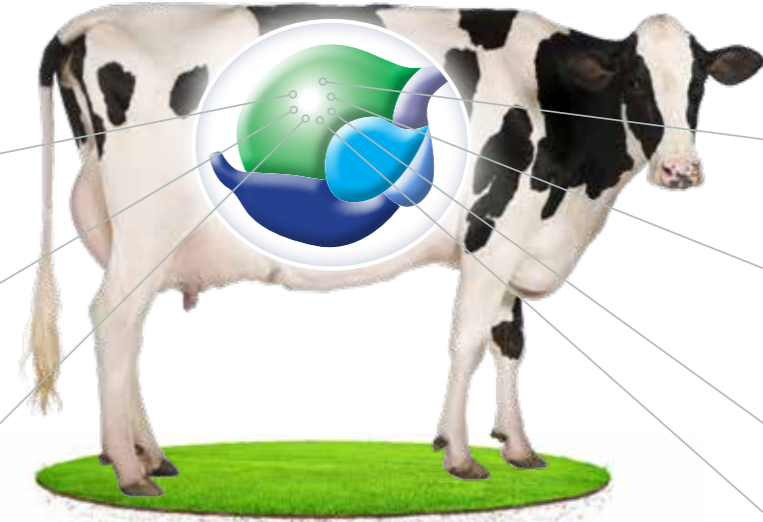
An active substance that helps maintain the balance of microflora in the intestinal tract of livestock

**NZ NATURAL ZEOLITE OPTIMATE™**

A registered toxin binder

**TRACE ELEMENTS**

Are very important for cell functions at biological, chemical and molecular levels



**PREBIOTICS**

Are fibres that assist with healthy gut bacteria and are important in maintaining a balanced rumen

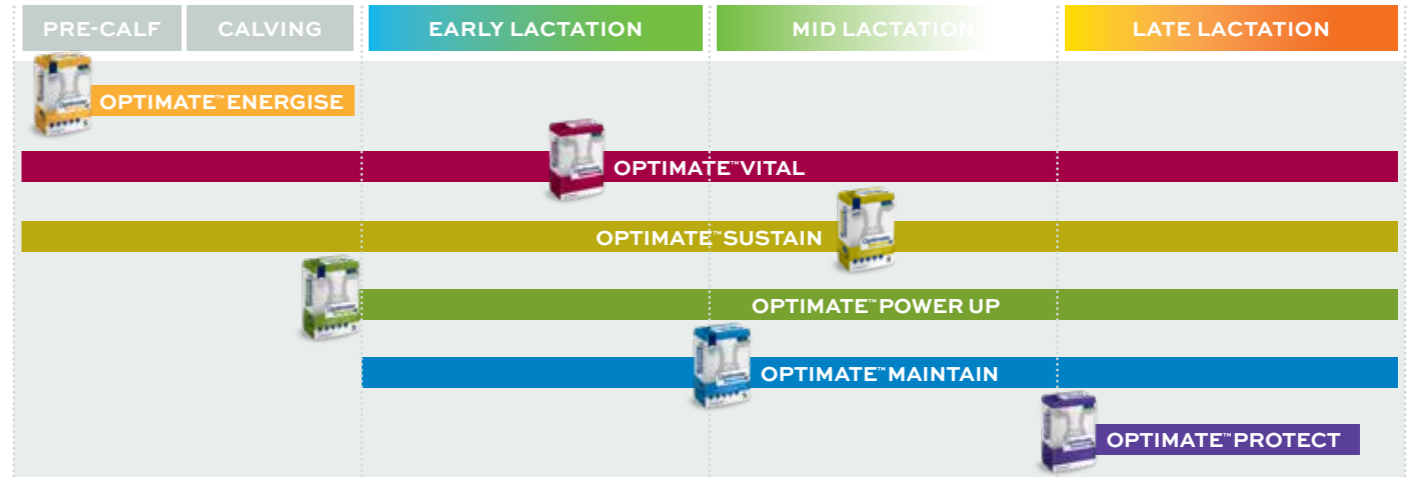
**MAGNESIUM (MG)**

An important macromineral that has many functions within the cow

**CALCIUM**

Essential macro mineral for metabolic function, optimum milk production and skeletal strength

**NO ANTIBIOTICS, NO TOXINS**



## CONVENIENTLY ALL-IN-ONE:

The **Optimate™** range features the next generation of dispersible granule, meaning less dust and less handling when feeding out. Conveniently all-in-one it saves you time and storage with no more measuring and mixing multiple minerals and trace elements.



## OPTIMATE™ ENERGISE

Strengthen your herd for calving



### ABOUT OPTIMATE™ ENERGISE:

- Increasing macro minerals and trace elements in their diet
- Providing prebiotics and probiotics
- Pre-calving support blend for dairy cows

### DIRECTIONS FOR USE:

- Feed Optimate™ Energise to dairy cows only, 21 days pre-calving, at a rate of 300 gm per cow, per day
- Do not feed to in-milk dairy cows
- Ensure Optimate™ Energise is thoroughly blended through the feed

### SUPPORT & STRENGTHEN

Introducing good bacteria and macro and trace minerals into the gut to support and strengthen for calving.

### INGREDIENTS:

Optimate™ ACVM Registration Number A011800  
See [www.foodsafety.govt.nz](http://www.foodsafety.govt.nz) for registration conditions

Kemin® CLOSTAT®

Diamond V® Original XPC™

### MACRO MINERALS:

Per 300g daily ration

Magnesium	22gm
Sulphur	13gm
Calcium	7gm
Phosphorus	2gm

### TRACE MINERALS:

Copper (protected/organic)	125mg
Cobalt	25mg
Zinc	850mg
Selenium	10mg
Iodine	32mg



PACK SIZE: 20 KG / 1 TONNE  
Available from your Rural Retailer or Feed Mill

## OPTIMATE™ POWER UP

Post calving high-performance feed supplement



### ABOUT OPTIMATE™ POWER UP:

- Prebiotics and probiotics for intestinal health
- Magnesium, calcium and phosphorous for lactating dairy cows
- Essential trace elements for a healthy animal
- Optimate™ is a registered toxin binder

### DIRECTIONS FOR USE:

- Feed 300 grams per cow per day
- Designed to be fed to lactating dairy cows

### SUPPORT YOUR HERD NATURALLY

Optimate™ Power Up is intended to give back to the cow what milking takes out. Non-toxic, no antibiotics a more natural way to support your herd.

### INGREDIENTS:

Optimate™ ACVM Registration Number A011800  
See [www.foodsafety.govt.nz](http://www.foodsafety.govt.nz) for registration conditions

Kemin® CLOSTAT®

Diamond V® Original XPC™

### MACRO MINERALS:

Per 300g daily ration

Magnesium	15gm
Calcium	56gm
Phosphorus	3gm

### TRACE MINERALS:

Copper (organic)	125mg
Cobalt	25mg
Zinc	850mg
Selenium	10mg
Iodine	32mg



PACK SIZE: 20 KG / 1 TONNE  
Available from your Rural Retailer or Feed Mill

## OPTIMATE™ SUSTAIN

Macro minerals for sustained performance



### ABOUT OPTIMATE™ SUSTAIN:

- Dispersible granule for easy distribution
- Macro minerals including; magnesium, calcium and phosphorus for lactating dairy cows
- Optimate™ is a registered toxin binder

### DIRECTIONS FOR USE:

- Feed Optimate™ Sustain via silo, mixer wagon, in-shed feeder or on feed pads
- Suitable with maize and grass silage dairy meal, dairy blends
- Feed 300 grams per cow, per day
- Only to be fed to lactating dairy cows

### INGREDIENTS:

Optimate™ ACVM Registration Number A011800  
See [www.foodsafety.govt.nz](http://www.foodsafety.govt.nz) for registration conditions

### MACRO MINERALS:

Per 300g daily ration

Magnesium	15gm
Calcium	56gm
Phosphorus	3gm

### SUSTAINED PERFORMANCE

Special blend of macro minerals in dispersible granules to be easily fed to dairy cows.



PACK SIZE: 20 KG / 1 TONNE  
Available from your Rural Retailer or Feed Mill

## OPTIMATE™ MAINTAIN

Maintain healthy herd performance



### ABOUT OPTIMATE™ MAINTAIN:

- Dispersible granule for easy distribution
- Includes magnesium and calcium
- Includes five essential trace minerals
- Optimate™ is a registered toxin binder

### DIRECTIONS FOR USE:

- Feed Optimate™ Maintain via silo, mixer wagon, in-shed feeder or on feed pads
- Suitable with maize and grass silage, dairy meal, dairy blends
- Feed 300 grams per cow, per day
- Only to be fed to lactating dairy cows

### INGREDIENTS:

Optimate™ ACVM Registration Number A011800  
See [www.foodsafety.govt.nz](http://www.foodsafety.govt.nz) for registration conditions

### MACRO MINERALS:

Per 300g daily ration

Magnesium	15gm
Calcium	56gm
Phosphorus	3gm

### TRACE MINERALS:

Copper (organic)	125mg
Cobalt	25mg
Zinc	850mg
Selenium	10mg
Iodine	32mg



PACK SIZE: 20 KG / 1 TONNE  
Available from your Rural Retailer or Feed Mill



## OPTIMATE™ VITAL

Essential all year round



### ABOUT OPTIMATE™ VITAL:

- Optimate™ is a registered toxin binder
- Dispersible granule for easy distribution
- Suitable for Sheep, Goats, Cows and Pigs

### DIRECTIONS FOR USE:

- Feed via silo, mixer wagon, in-shed feeder or on feed pads
- Suitable with maize and grass silage, dairy meal, dairy blends
- Feed 100 to 300 grams per cow/per day or 1 to 2% of daily intake

### INGREDIENTS:

Optimate™ ACVM Registration Number A011800  
See [www.foodsafety.govt.nz](http://www.foodsafety.govt.nz) for registration conditions  
Bentonite

PACK SIZE: 20 KG / 1 TONNE



## OPTIMATE™ PROTECT

Facial eczema and heat stress protection



### ABOUT OPTIMATE™ PROTECT:

- Aid in prevention of facial eczema
- ACVM Registered Zinc Oxide, No.A011756
- Minimise the impact of heat stress
- Simple to use dispersible granule
- Contains daily supplement of calcium, magnesium and phosphorus

### DIRECTIONS FOR USE:

- Feed Optimate™ Protect via silo, mixer wagon, in-shed feeder or on feed pads
- Suitable with maize and grass silage dairy meal, dairy blends
- 300 grams per day per cow (500kg liveweight)
- Suitable for use for lactating dairy cows

### INGREDIENTS:

Optimate™ ACVM Registration Number A011800  
See [www.foodsafety.govt.nz](http://www.foodsafety.govt.nz) for registration conditions

Organic chromium 200mg

### MACRO MINERALS: Per 300g daily ration

Magnesium	15gm
Calcium	56gm
Phosphorus	3gm
Zinc oxide	13.75gm

PACK SIZE: 20 KG / 1 TONNE

Available from your Rural Retailer or Feed Mill



## OPTIMATE™ HOOF RESCUE

Organic minerals, vitamins & amino acids



### ABOUT OPTIMATE™ HOOF RESCUE:

- Biotin is necessary for synthesis of keratin, a hard structural protein in horns and hooves
- Myco-toxin binding for animal health and balancing rumen PH. Acidosis can contribute to laminitis
- Optimate™ is a registered toxin binder

### DIRECTIONS FOR USE:

- Feed Optimate™ Hoof Rescue via mixer wagon, trough feeder or mixed on feed pads.
- Suitable with maize and grass silage dairy meal, dairy blends.
- Feed 60 - 120 grams per cow, per day.
- Suitable for use for lactating dairy cows

PACK SIZE: 20 KG / 1 TONNE



### INGREDIENTS:

Optimate™ ACVM Registration Number A011800  
See [www.foodsafety.govt.nz](http://www.foodsafety.govt.nz) for registration conditions

### MACRO MINERALS: Per 60g maintenance daily ration

Biotin	10mg
Zinc	500mg
Chromium	417mg
Methionine	720mg

### MACRO MINERALS: Per 120g stress period daily ration

Biotin	20mg
Zinc	1000mg
Chromium	834mg
Methionine	1440mg

## OPTIMATE™ ADVANTAGE

Giving your herd a top advantage for health & performance



### ABOUT OPTIMATE™ ADVANTAGE:

- Dispersible granule for easy distribution
- Includes magnesium, calcium and five essential trace minerals
- Includes amino acid, l-methionine, which enhances protein synthesis and essential for absorption of selenium and zinc
- Includes organic source of chromium to help improve glucose use and reduces the negative impacts of heat

### DIRECTIONS FOR USE:

- Feed Optimate™ Advantage via silo, mixer wagon, in-shed feeder or on feed pads
- Suitable with maize and grass silage, dairy meal, dairy blends
- Feed 230 grams per cow, per day
- Only to be fed to lactating dairy cows

PACK SIZE: 20 KG / 1 TONNE



### INGREDIENTS:

Optimate™ ACVM Registration Number A011800  
See [www.foodsafety.govt.nz](http://www.foodsafety.govt.nz) for registration conditions

Organic chromium 110mg

### MACRO MINERALS: Per 230g daily ration

Magnesium	10gm
Calcium	30gm
Copper (organic)	150mg
Cobalt	15mg
Zinc	950mg
Selenium	6mg
Iodine	19mg
Methionine	720mg

### TRACE MINERALS:



## MAXIMIN™

Maximise productivity



### ABOUT MAXIMIN™:

- Dispersible granules for easy distribution
- Includes magnesium, calcium, phosphorus and trace minerals
- Includes monensin sodium at 300mg per dose (1.5g Rumensin® 20% Millmix ACVM Act A009107)

### DIRECTIONS FOR USE:

- Feed Maximin® via silo, mixer wagon, in-shed feeder or on feed pads
- Suitable with maize and grass silage dairy meal, dairy blends
- Feed 300 grams per cow, per day (500kg liveweight)
- Suitable to be fed to lactating dairy cows

PACK SIZE: 20 KG | 1 TONNE  
Available from your Rural Retailer or Feed Mill



### INGREDIENTS:

Optimate™ ACVM Registration Number A011800  
See [www.foodsafety.govt.nz](http://www.foodsafety.govt.nz) for registration conditions

### MACRO MINERALS: Per 300g daily ration

Magnesium	15gm
Calcium	52gm
Phosphorus	3gm
Sodium	6gm
Monensin Sodium	300mg

### TRACE MINERALS:

Copper (organic)	125mg
Cobalt	25mg
Zinc	850mg
Selenium	10mg
Iodine	32mg
Biotin	20mg

## MAIZE BALANCER

Bridging the gap for peak performance



### ABOUT ZORBIFRESH™ ACTIVE:

- Includes supplementary calcium, magnesium, and sodium
- Helps naturally balance out mineral imbalances in the diet
- Supports overall health and vitality of lactating dairy cows

### DIRECTIONS FOR USE:

- Feed Maize Balancer via silo, mixer wagon, in-shed feeder or on feed pads
- Suitable with maize and grass silage dairy meal, dairy blends
- Suitable for Lactating Dairy Cows only. Not to be fed 4-6 weeks prior to calving due to the high level of calcium.

### INGREDIENTS:

Calcium, sodium, magnesium

### MACRO MINERALS: A 200g feed rate will contain

Calcium	50gm
Sodium	15gm
Magnesium	15gm

### ENRICHES DIETS

heavy in maize silage, whole crop silage, greenfeed, PKE & or pasture silage.

PACK SIZE: 20 KG | BULK DELIVERY  
Available from your Rural Retailer



## MAXIMIN™ PROTECT

Maximise productivity and protection



### ABOUT MAXIMIN™ PROTECT:

- Aid in prevention of facial eczema
- Minimise the impact of Heat Stress
- Dispersible granules for easy distribution
- Aids in the control of ketosis, prevention and control of coccidiosis caused by Eimeria bovis and Eimeria zuernii and aids in the reduction of bloat

### DIRECTIONS FOR USE:

- Feed 300 grams per cow, per day (500kg liveweight)
- Do not exceed the recommended dose rate. Knowing animal liveweight is important as for zinc to be effective it needs to be administered at 2.75g of Zinc Oxide per 100kg liveweight
- For best results start regular Zinc treatment two weeks before conditions normally occur until cooler winter conditions (Dec to April)

PACK SIZE: 20 KG | 1 TONNE  
Available from your Rural Retailer or Feed Mill



### INGREDIENTS:

Optimate™ ACVM Registration Number A011800  
See [www.foodsafety.govt.nz](http://www.foodsafety.govt.nz) for registration conditions

Organic chromium	200mg
Calcium	52gm
Magnesium	19gm
Zinc Oxide	13.75gm
Phosphorus	3gm
Sodium	6gm
Monensin Sodium	300mg

Calcium	52gm
Magnesium	19gm
Zinc Oxide	13.75gm
Phosphorus	3gm
Sodium	6gm
Monensin Sodium	300mg

### TRACE MINERALS:

Copper (organic)	125mg
Cobalt	25mg
Zinc	850mg
Selenium	10mg
Iodine	32mg
Biotin	20mg



Maximise productivity and reproductive results for your milking cows by supplementing with **Maize Balancer**. Correct mineral imbalances for optimal health, reproduction, and performance!





## OPTISOLVE™ 5

Water soluble trace elements for optimal health and performance



### ABOUT OPTISOLVE™ 5:

- Trace elements for dairy cows for optimal health and performance
- Dissolves in water
- Effective method of getting critical trace elements into your dairy herd

### DIRECTIONS FOR USE:

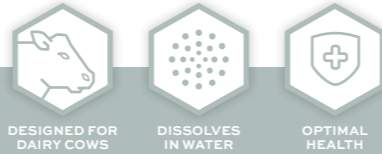
- Dosage rate 5 grams per cow per day
- Suitable for dosing into stock drinking water through Dosatron, Se-Tech, Grundfos - dose pumps and in-shed drenching systems

### INGREDIENTS:

#### MACRO MINERALS:

Per 5g dose

Selenium	10mg
Copper chelated	250mg
Cobalt chelated	25mg
Iodine	30mg
Zinc	1000mg



DESIGNED FOR DAIRY COWS

DISSOLVES IN WATER

OPTIMAL HEALTH

PACK SIZE: 20 KG  
Available from your Rural Retailer



Our premium health formulations are designed as animal feed supplements; supporting the health, growth, and performance of livestock.

## OPTISOLVE™ MULTX ORIGINAL

Premium seaweed-enhanced animal health formulation



### ABOUT OPTISOLVE™ MULTX ORIGINAL:

- Especially useful to support fertility and mating
- Enhance animal health and wellbeing
- Prebiotic loaded with vitamins and minerals on a kelp base
- Blended ready to use

### DIRECTIONS FOR USE:

The thick concentrated solution can be diluted with water on a 50:50 mixture - but ensure the required amount is administered.

### RANGE OF NUTRITIONAL BENEFITS:

OPTISOLVE™ MULTX ORIGINAL contains a triple blend of selected seaweeds as a prebiotic loaded with vitamins and minerals. Together with non-protein nitrogen (NPN) the blend provides a range of nutritional benefits helping to promote optimal growth, health and resiliency during times of stress.



NATURAL SEAWEED

INCREASE FEED CONVERSION

SUPPORTS IMMUNITY

INCREASE REPRODUCTIVITY

PACK SIZE: 20L | 200L | 1000L  
Available from your Rural Retailer

## OPTISOLVE™ MULTX 5-IN-1

The power of seaweed and boosted with fulvic, folic and iodine



### ABOUT OPTISOLVE™ MULTX 5-IN-1:

- Especially useful to support fertility and mating
- Fulvic acid can enhance the bio-availability and absorption of other nutrients
- Prebiotic loaded with vitamins and minerals on a kelp base
- Folic acid and Iodine are both essential for healthy cell growth

### DIRECTIONS FOR USE:

The thick concentrated solution can be diluted with water on a 50:50 mixture - but ensure the required amount is administered.

### BETTER REPRODUCTIVE PERFORMANCE:

Fulvic, folic, and iodine can all contribute to improved reproductive performance in animals by promoting healthy reproductive cell development, protecting reproductive cells and maintaining thyroid function. Folic acid and iodine are both essential for healthy cell growth and development.



NATURAL SEAWEED

INCREASE FEED CONVERSION

SUPPORTS IMMUNITY

INCREASE REPRODUCTIVITY

PACK SIZE: 20L | 200L | 1000L  
Available from your Rural Retailer

### INGREDIENTS:

Seaweed - Ascophyllum, Laminaria, Sargassum Seaweeds

Trace elements:  
Non protein nitrogen

Note: Seaweed contains an array of trace elements and amino acids

### INGREDIENTS:

Seaweed - Ascophyllum, Laminaria, Sargassum Seaweeds

Trace elements:  
Non protein nitrogen  
Fulvic acid, Folic acid, Iodine

Note: Seaweed contains an array of trace elements and amino acids





## STOCKROCK® IS NZ ZEOLITE, QUARRIED AT NGAKURU, SOUTH OF ROTORUA.

Zeolite is a lightweight, soft sedimentary rock that we use as race rock to help prevent cow lameness.

Following seismic events, the ash is compressed and then, activated by geothermal water to produce an 'altered clay'. Our zeolite is a lighter rock, meaning there is more volume per tonne than traditional race rock.

### FEATURES OF STOCKROCK®:

- A lightweight rock meaning it goes further for your money, and it lasts longer
- Lasts up to 5 years depending on cow traffic
- Compared to race alternatives **StockRock** goes further per tonne

### THE COST OF LAME COWS

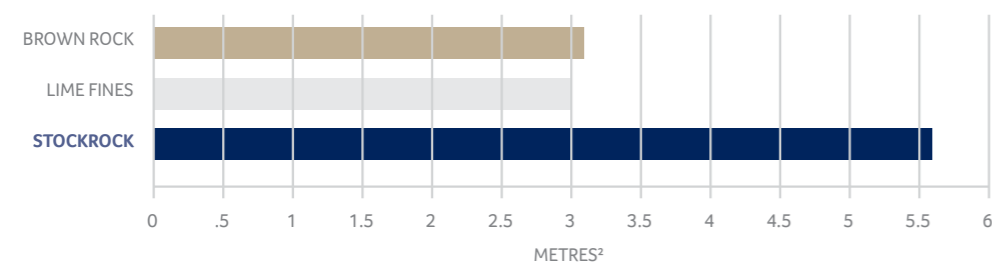
Lameness can cause a decrease in the cow's ability to graze, a loss of milk production (and income), lowered reproductive performance, an increase in the chance of being culled and the additional costs of veterinary treatment.

*Dairy NZ provides an online Healthy Hoof Lameness Calculator, below we show a rudimentary calculation based on a 400 cow herd with 10% lameness.*

LOSS OF INCOME FROM	\$ PER LAME COW	\$ PER FARM
Loss of milk solids production (@\$7.15 kg/ms)	\$557.00	\$22,288.00
Cost of treatment (by farm workers and/or vets), culling, wastage (discarded milk)	\$560.00	\$22,400.00
Impact on reproductive performance (decrease of six-weeks in-calf rate and increase empty rate)	\$111.00	\$4,440.00
<b>TOTAL \$ LOST THROUGH LAMENESS</b>	<b>\$1,228.00</b>	<b>\$49,128.00</b>

### ECONOMICALLY STOCKROCK STACKS UP!

The below graph shows the distance covered by 1 tonne of race rock options - assuming 200 mm depth:



**JOHN ANDERSON**  
Milks herd of 500  
North of Mangakino

*"Some of our **StockRock** has been down 10 years now. We do a little more each year.*

*Some parts were really muddy with a spring underneath and **StockRock** sorted the problem over night.*

*We were having 1 to 2 lame cows a day, now that is more like 1 to 2 a week, not sure of that percentage, but it is a great improvement."*

**StockRock** is available from **BPM**  
P 0800 88 55 55  
stockrock.co.nz



Before



After



Before - farm race in wet conditions before **STOCKROCK®** is laid.



After - completed **STOCKROCK®** farm race.



## ZORBIFRESH™ Absorbent bedding conditioner



### ABOUT ZORBIFRESH™:

- 100% natural mineral
- Absorbent to 199% of its weight, soaking up ammonia and moisture, leaving bedding dryer
- Reduces pathogenic load in shed and reduces ammonia in environment for healthier conditions for animals and staff

### DIRECTIONS FOR USE:

- Apply initially at 500 gm/m<sup>2</sup> on a weekly basis
- Regularity of application may need to be altered depending upon animal density and seasonal aspects with dryer or wetter periods
- Can be spread mechanically with a fertiliser or ATV spinner at the recommended application rates or manually spread by hand

For animal bedding only

PACK SIZE: 1 TONNE  
Available from your Rural Retailer



### INGREDIENTS:

Natural BPM zeolite from New Zealand

## HOW ZORBIFRESH™ ACTIVE WORKS IN YOUR BARN

For the health and wellbeing of animals and staff it is important to soak up moisture and ammonia and to kill bacteria such as Staph aureus and E. coli - this is exactly what Zorbifresh™ Active is designed to do.

**Reduces moisture:** Zorbifresh™ Active absorbs up to 199% of its weight in moisture

**Works against bacteria:** Proven to kill bacteria such as Staph aureus and E. coli at 100% kill rate within 1 hour

**Reduces odour:** By absorbing ammonia from the bedding Zorbifresh™ Active greatly reduces the odour in the barn

**Safer environment:** Zorbifresh™ Active is a more natural way to absorb moisture and ammonia and to kill bacteria for a safer environment for staff and animals

## BACTERIA LOADING



FRONT	MIDDLE	REAR
690,000 CFU	19,000,000 CFU	41,000,000 CFU

### BACTERIAL KILL RATES:

**100% effective** against Staph aureus and E. coli after 1 hour exposure

Organic soiling of the bedding  
**100% kill** after 24 hours exposure

## ZORBIFRESH™ ACTIVE

Reduce bacteria, ammonia and moisture in bedding

### INGREDIENTS:

Natural BPM zeolite from New Zealand

Oxone

### ABOUT ZORBIFRESH™ ACTIVE:

- A bedding additive for cows, calves, equine and swine
- Absorbs up to 199% of its weight in moisture
- Reduces odour for a safer environment
- Starts killing bacteria (including Staph aureus and E. coli) as soon as it is applied and keeps killing beyond 24 hours

### DIRECTIONS FOR USE:

From 250 grams to 500 grams per square meter of animal bedding.

### KEEP PENS CLEAN & DISEASE FREE

Zorbifresh™ Active can be used as part of a regular process to keep calf pens clean and disease free, and is also highly effective in larger doses post a bacterial outbreak.

Zorbifresh Active kills bacteria such as Staph aureus and E. coli and other gram negative and gram positive bacteria.



PACK SIZE: 20 KG  
Available from your Rural Retailer



**David McDonald**  
Carpe Diem NZ Ltd, 650 dairy goat farm

"The shavings usage in the zeolite barn was 2/3 the volume of the non Zorbifresh barn to maintain the same appearance and we have very high standards.

*The ammonia levels have been less in the Zorbifresh barn throughout the period we have been monitoring."*







PRINTED ON  
100% RECYCLED  
PAPER



Blue Pacific  
**MINERALS**

CLEVER *by* NATURE

**P** 0800 678 444  
**E** orders@bpmnz.co.nz  
**W** www.bpmnz.co.nz

For more information

SCAN ME



April 2024

Follow us



[www.linkedin.com/company/blue-pacific-minerals](https://www.linkedin.com/company/blue-pacific-minerals)



@BPMNZAgri



@bpmnz\_cleverbynature